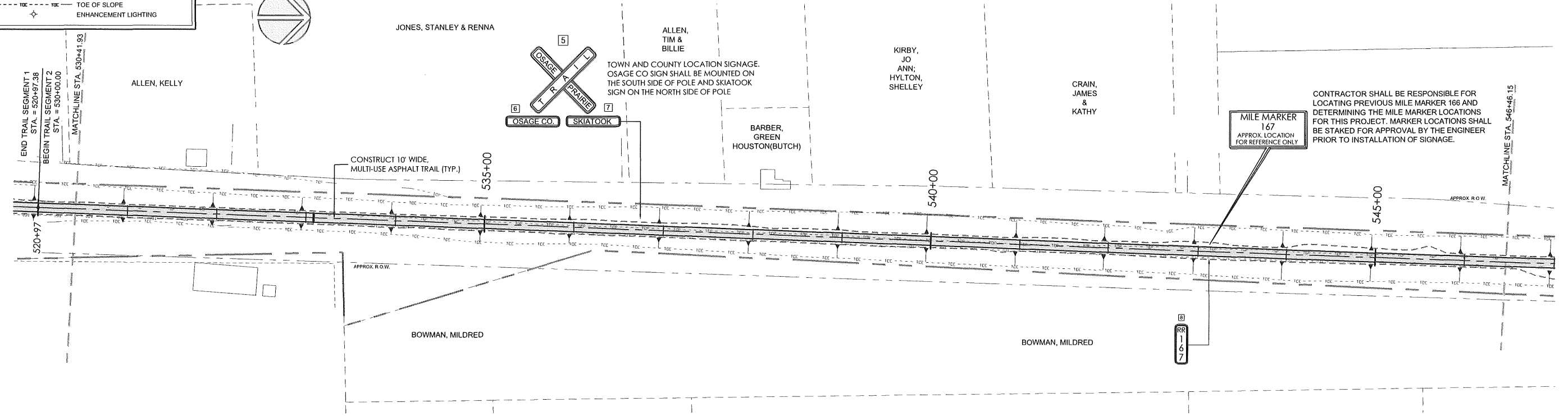
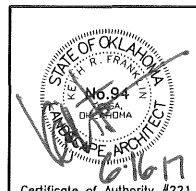
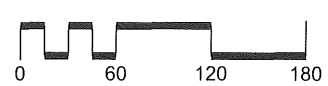
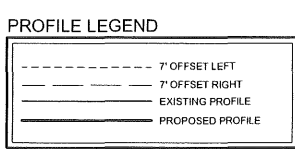
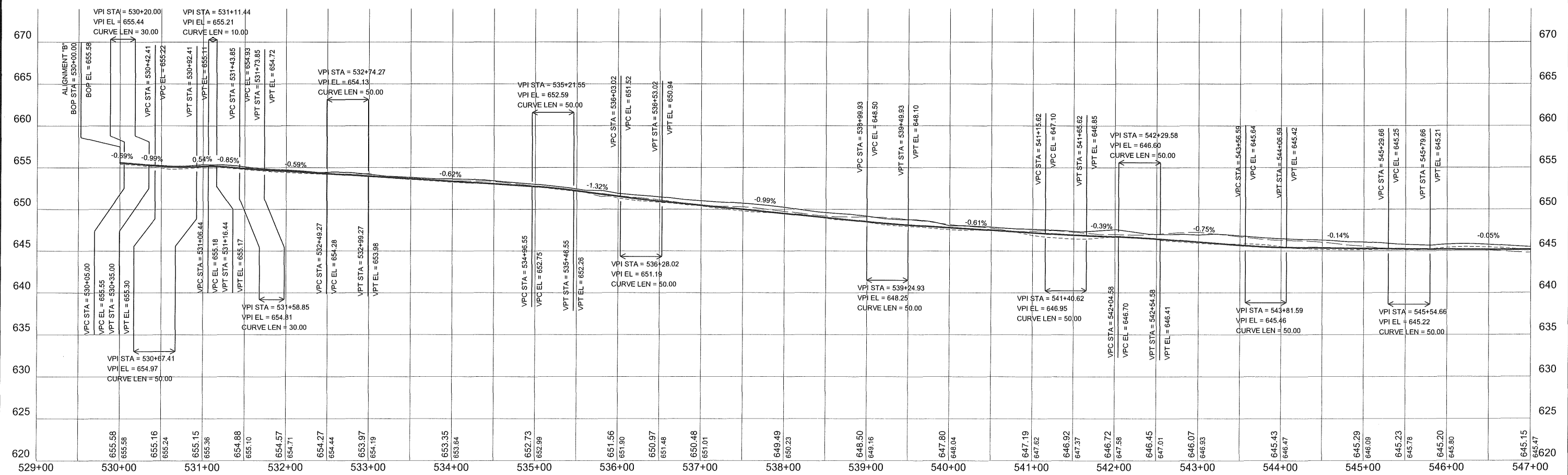


SCALES (22x34):
1" = 60' HOR
1" = 6' VER



CONTRACTOR SHALL BE RESPONSIBLE FOR LOCATING PREVIOUS MILE MARKER 166 AND DETERMINING THE MILE MARKER LOCATIONS FOR THIS PROJECT. MARKER LOCATIONS SHALL BE STAKED FOR APPROVAL BY THE ENGINEER PRIOR TO INSTALLATION OF SIGNAGE.



| | | | |
|-------------------------------|-------|--|--|
| Osage Prairie Trail Extension | | PREPARED BY: LANDPLAN CONSULTANTS 1110 West 23rd Street TULSA, OK 74107 918-584-6464 | |
| Design | JM | 8/16 | PLAN AND PROFILE (2) State Job No. 28839 (04), 32530 (04) Sheet No. 15 of 32 |
| Drawn | JM/BB | 8/16 | |
| Checked | JM/KF | 1/17 | |
| Approved | | | |
| Squad | LPCI | | |

F:\691 Osage Prairie Trail Ext\Final\CAD BASE Files\From RoadCalc363\F&P Sheets\RCp01001R1.dwg, 6/15/2017 8:46:30 AM